



CHARACTER: Amphiön
PLAYER: _____
HOMELAND: Sicania

CLASS: Warrior (Centaur)
AGE: 24 DEITY: Apollo
LINEAGE: Son of Arktos

LEVEL
2nd

TALENTS: Musician (pan flute) and Wrestler
LANGUAGES: Gaian, Minean (illiterate)

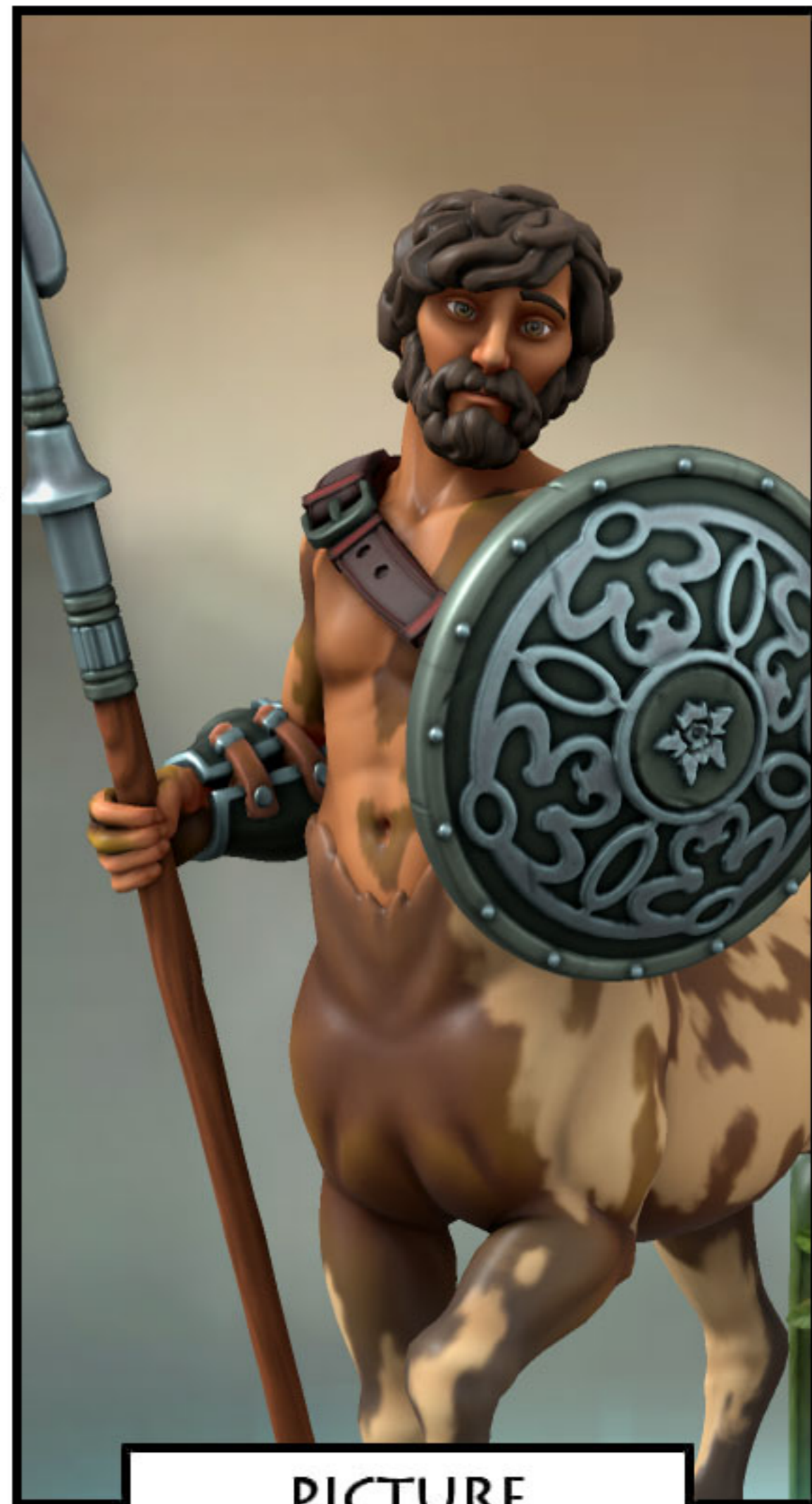
BACKGROUND: Amphiön, son of Arktos, of Clan Eurytion, is a Centaur from the northern land of Sicania. He has travelled to the Land of the Three Cities so he can learn more about humanity.

SPECIAL ABILITIES: Extraordinary Agility: EDC +1 against melee attacks/missiles when galloping, unless surprised or wearing a breastplate.

Four-legged: Use missile weapons while running; gallop x4 speed

DEEDS: Amphiön was a member of the party that slew the Giant Lion of Minea.

He was the leader of a band of warriors that patrolled the road from Thena to Argos to hunt down a bandit leader called Korydon the Brute. Korydon led a ragtag band of cutthroats, thieves, and assorted criminals.



PICTURE

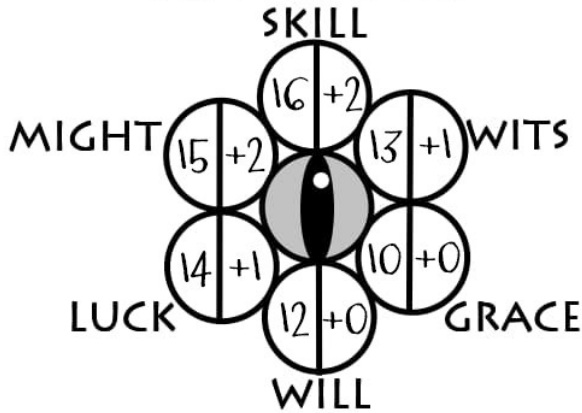


ATTRIBUTES & COMBAT

FATE

CHARACTER: Amphion PLAYER: _____

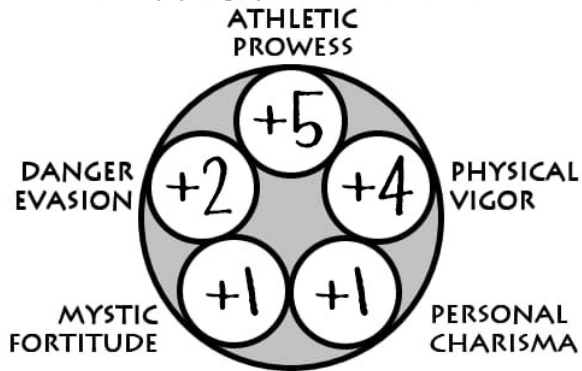
ATTRIBUTES



HEALTH



SAVING ROLLS



COMBAT MODIFIERS

13 INITIATIVE

MELEE/MISSILE

WPN: Spear
 DAM: 1D6
 FAV?: Y/N

+5

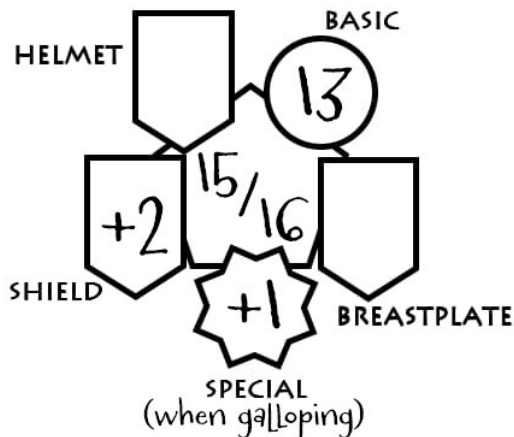
WPN: Dagger
 DAM: 1D3
 FAV?: Y/N

WPN: _____
 DAM: _____
 FAV?: Y/N

WPN: Javelin
 DAM: 1D6
 RNG: 150 ft
 AMM: 3
 FAV?: Y/N

WPN: _____
 DAM: _____
 RNG: _____
 AMM: _____
 FAV?: Y/N

DEFENSE CLASS





EQUIPMENT

CHARACTER: Amphion PLAYER: _____

GLORY/WISDOM
EXPERIENCE

TOTAL **1130**

NEXT LVL **2000**

LEVEL BENEFITS

+4 Wits, +1 to Luck and +2 to Might,
Skill, Wits, or Will (player's choice)

WEALTH

32

GOLD

SILVER

COPPER

WEAPONS

| WPN | DAM | RNG | ENC |
|---------|-----|---------|-----|
| Spear | 1D6 | 0 | 2 |
| Dagger | 1D3 | 0 | 0 |
| Javelin | 1D6 | 150 ft. | 6 |
| | | | |
| | | | |

COMMON ITEMS

| | ENC | | ENC |
|--|-----|--|-----|
| | | | |
| | | | |
| | | | |
| | | | |

ARMOR

| ARMOR | EDC + | ENC |
|--------|---------|-----|
| Shield | 13+2=15 | 2 |
| | | |
| | | |
| | | |

MYTHIC ITEMS

| | ENC |
|--|-----|
| | |
| | |
| | |
| | |

ENCUMBRANCE **20+10=30**

| ENC. | STATUS | MOVE | |
|-----------|-----------|-----------|-------|
| 20 | UNENCUM. | 60 | FT/RD |
| 25 | ENCUMBER. | 40 | FT/RD |
| 35 | HVY ENC. | 20 | FT/RD |

OTHER ITEMS

| | ENC |
|--|-----|
| | |
| | |
| | |
| | |